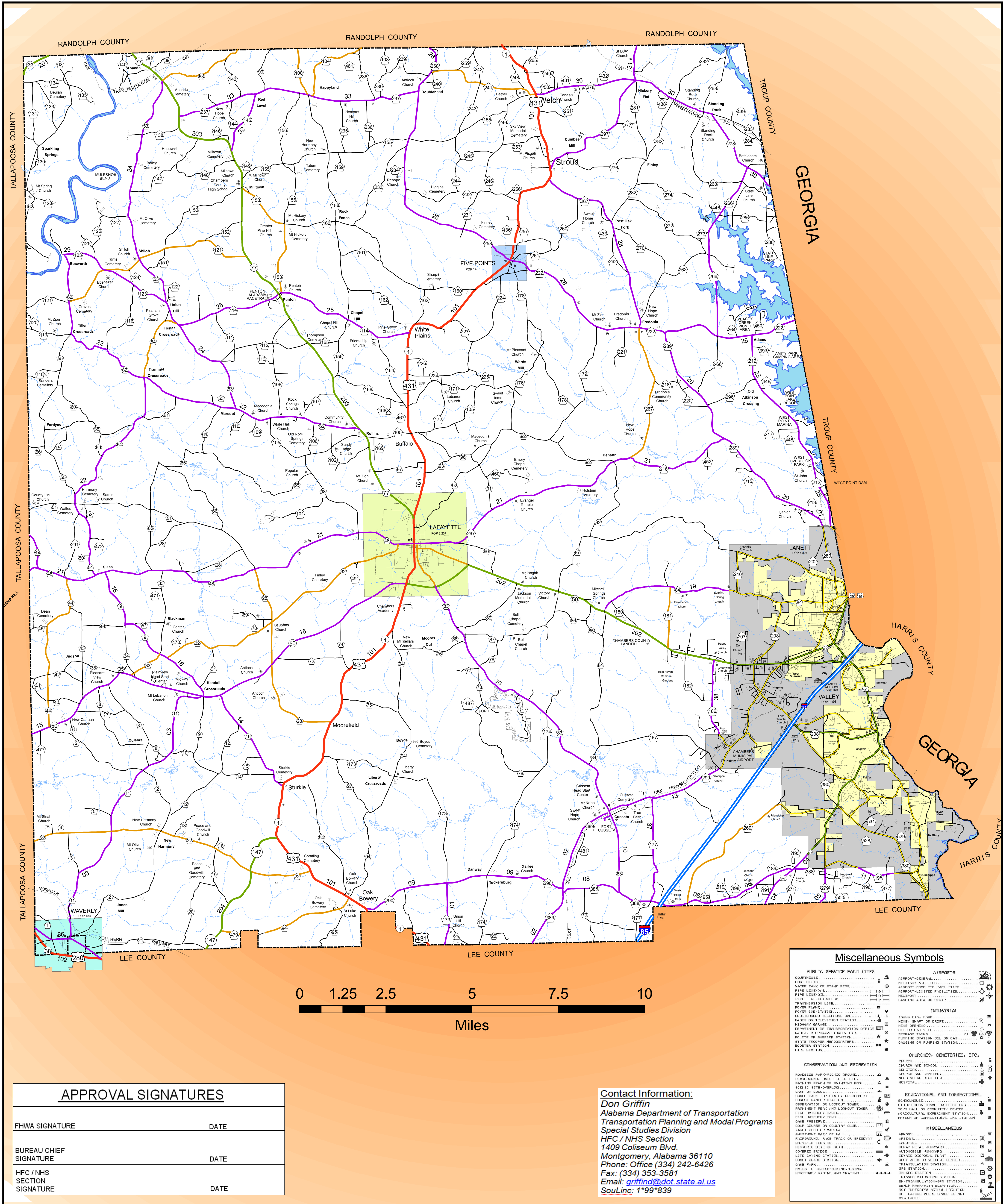


CHAMBERS COUNTY HIGHWAY FUNCTIONAL CLASSIFICATION SYSTEM



APPROVAL SIGNATURES

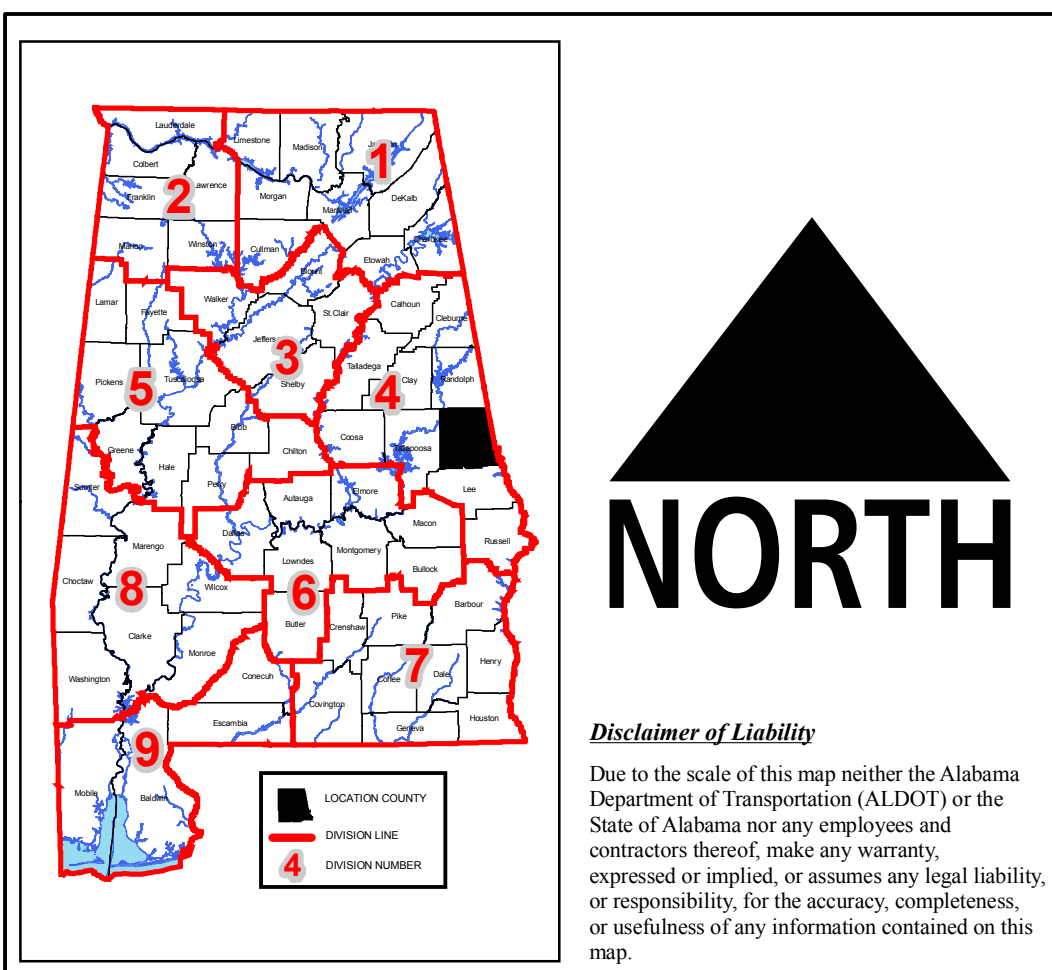
FHWA SIGNATURE	DATE
BUREAU CHIEF SIGNATURE	DATE
HFC / NHS SECTION SIGNATURE	DATE

Contact Information:

Don Griffin
 Alabama Department of Transportation
 Transportation Planning and Modal Programs
 Special Studies Division
 HFC / NHS Section
 1409 Coliseum Blvd.
 Montgomery, Alabama 36110
 Phone: Office (334) 242-6426
 Fax: (334) 353-3581
 Email: griffind@dot.state.al.us
 SouLine: 1*99*839

Miscellaneous Symbols

PUBLIC SERVICE FACILITIES	AIRPORTS
CONSERVATION AND RECREATION	CHURCHES, CEMETERIES, ETC.
INDUSTRIAL	EDUCATIONAL AND CORRECTIONAL
MISCELLANEOUS	



CHAMBERS COUNTY - 09

ALABAMA DEPARTMENT OF TRANSPORTATION Highway Functional Classification Transportation Planning / Modal Programs Bureau

NAME	DATE	COMMENTS
D.H. GRIFFIN	12/05/2008	FR. BOSWORTH SOUTH - MINOR COLLECTOR TO LOCAL (CR_62)
D.H. GRIFFIN	12/05/2008	FR. COUNTY LINE NORTH - MINOR COLLECTOR TO LOCAL (CR_62)
D.H. GRIFFIN	6/4/2009	FR. CR 299 TO VALLEY URBAN LIMITS - LOCAL TO URBAN COLLECTOR - HFC #1V38 CR 186
D.H. GRIFFIN	6/4/2009	FR. VALLEY URBAN LIMITS NORTH TO SR 50 - LOCAL TO MAJOR COLLECTOR - HFC #38 CR 186

Legend	Functional Classification	Proposed Functional Class
	Urban Interstate - 11	Urban Interstate - 11
	Freeway - 12	Urban Freeway - 12
	Urban Principal Arterial - 14	Urban Principal Arterial - 14
	Urban Minor Arterial - 16	Urban Minor Arterial - 16
	Collector - 17	Collector - 17
	Rural Interstate - 1	Rural Interstate - 1
	Rural Principal Arterial - 2	Rural Principal Arterial - 2
	Rural Minor Arterial - 6	Rural Minor Arterial - 6
	Rural Major Collector - 7	Rural Major Collector - 7
	Rural Minor Collector - 8	Rural Minor Collector - 8
	Miscellaneous Items	
	GIS OpenWater_ALDOTDivisions	
	GIS NHD_by_County	
	GIS Swamp_Marsh_HR_NHDWB_County	
	TRANSDATA.urban_large_study	
	TRANSDATA.urban_small	
	TRANSDATA.urban_medium	
	GIS County	
	INTERSTATE	Chambers County Cities
	US ROUTES	Five Points
	STATE ROUTES	Lafayette
	COUNTY ROADS	Lanett
	FOREST ROADS	Valley
		Waverly